

DESCRIPTION

VAULT CLOUD CENTRAL

Regardless of the size of your organization, the desire to keep people and goods securely inside and threats outside has become a fundamental premise, solidifying the use of security systems such as Access Control. In a Globalized world such as today's, our solutions allow multi-site companies to have the power to administrate their system from a single location, remotely, reducing operational costs and centralizing expertise. At the same time, Access Control offers total mobility, because it is a CLOUD platform allowing any computer or mobile device with a navigator to be connected to the system, through the internet. It is an open architecture solution, making integration with several other systems easy, either through SDK, Metadata, On-screen Display or Data Banks.

VAULT CLOUD SITE

A software module for a local access control server. Having several resources such as integration with CCTV systems, elevator control, intrusion alarm sensors, integration with fire detection systems, visitor registration, control system (VMS), and much more. It works in conjunction with site controllers (doors, turnstiles, elevators, lockers/racks, gates/barriers, etc.), feeding them with the business rules and receiving their transactions. In case your communication is off-line, the controllers will continue to operate in a transparent manner, allowing people and vehicles to continue circulating according to their privileges, and when communication is reestablished, all the information will be synchronized with the cloud. In addition, the VAULT CLOUD SITE communicates constantly with the VAULT CLOUD CENTRAL, to update and backup your Data Bank, incrementing, in an exponential way the System's security and integrity.

VAULT CLOUD CENTRAL

Is responsible for centralizing and managing all the information from all the sites. It may segment the Access privileges and reports of all the sites, independently. It receives the transactions from all the servers with VAULT CLOUD SITE, and organizes them in the Cloud. It is a powerful tool for large scale systems, making their administration easier and guaranteeing maximum efficiency and reliability on large data volume. It also has additional valuable tools such as Web Visitors Pre-registration, Data Bank segmentation and much more.

CLOUD ACCESS CONTROL

VAULT CLOUD CENTRAL is designed for the 21st century. The option of hosting the software on Cloud, allow administrators to instantly and effortlessly manage all employee credentials, monitor all activity, and assign mobile keys from any device, anywhere, anytime, through our simple and intuitive web user interface dashboard. By having a cloud based access control software, you turn your capital expenses into operational ones. There are no high costs associated with the purchase of servers or workstations. Furthermore, all the processes are overlooked by a security specialist of your access control provider. There is no need to hire a security staff member. As you can see, a cloud based physical access control system turns complex security processes into simpler, more flexible and scalable solutions. From lack of local servers and proprietary software makes security owner easier to manage.



BENEFITS

Cloud software

Vault Cloud Central is a flexible, centralized access control platform that can be deployed either on the cloud or on-premise (on the ground) to provide seamless and secure management of multiple sites. Each site registered within the system can host an instance of the software, enabling decentralized control while maintaining centralized oversight.

Synchronized data

The more employees, freelancers and locations, the greater the need to have a watertight access control system in place. Updating access control system from anywhere gives you the agility to update or delete access rights immediately.

Local or central control

Guarantees drastic security operational costs reduction, efficient auditing, as well as process enhancement and immediate response in case of events.

Total integration

The open architecture platform allows integration with several other systems, either through SDK, Metadata, On-screen Display or Data Bank. Custom made web API can be arranged as well.

Infrastructure Cost-benefit

The vast majority of the sites already have Ethernet cable, so very little or no additional cable is necessary.

Wireless networks

Wireless networks may be used to save cables or when cable installation is difficult or even impossible, such as in museums or hospitals.

Pushing technology

Data, when existing, can be transferred in packages, incrementing the transmission speed from controllers to server, providing the user with real time transactions.

Reduction in band consumption

High speed in the 10/100 Mbps communication, drastically reduces band consumption.

Peer-to-peer communication

Controllers communicate point to point, amongst themselves, therefore alarm signals are transmitted without the need of an on-line server.

Single-card solution

The flexible architecture Site/Cloud allows for a single register to be made for a card user, and for the card user to Access, regionally, several locations, bringing to reality the true characteristic on an Cloud Central system. The software permits different privileges to system operators and administrator, in a way that regional or global access levels may be created.

Biometric Integration

Vault Cloud Central software offers native support for biometric technologies such as Facial Recognition and Fingerprint Authentication, streamlining the user experience and reducing dependency of external software platforms.

Total scalability of LAN/WAN architecture

Increments of one up to hundreds or thousands of IP controllers, one by one, provide great flexibility to the system. From small companies to global companies with installations in every continent, Vault Cloud Central allows for unlimited scalability.

Global anti-passback

This feature establishes a specific sequence in which access cards must be used in order for the system to grant access. VAULT solution do not need for a device or software to be online. This eliminates the chances of failure in case the server is down.

Shelf integration

Several third-party systems are already integrated, one way or bi-directionally, such as CCTV systems, LPR systems, ERP systems, Human resources, Building automation, elevators, etc.

Stability, security and cost-benefit

The system was developed in true IP for more than 10 years ago, and its maturity guarantees high stability and above average performance. Its cost-benefit confers to it the greatest flexibility in the market, in projects small to large.

SQL Data Bank

The use of MSDE, SQL Express or SQL Server data base structures confers flexibility and high stability to big or small projects.*Check "Oracle" option.

Patented search card Algorithm

The patented search algorithm allows the user to have his authentication checked in less than one second, even with 150,000 user registers stored on the controller, on off-line mode.

Modularity

Several basic add-ons (such as managerial clocking control) or other which can be purchased, such as Guard Round System, integration with Fire Centers and much more, make up one of the most complete and versatile solutions in the world market.

Visitor registration system

From the pre-registration via Web, which can be done directly by the collaborators to facilitate and accelerate the visitor entry processes in the various receptions, to a high speed application system, with a registration of up to 5 photos per visitor, registration of belongings, message sending, printing of name tags and several kinds of reports, make up one of the most versatile and powerful solutions in the market.

VAULT CLOUD CENTRAL

RESOURCES

- Segmented Data Base;
- Open software architecture, with several off the shelf, pre-formatted integrations;
- Synchronization of Multiple Data Bases via net;
- Multi-level, multi-sites server support;
- Autonomous operation per site, with independent regional control;
- Centralized multiple operation and administration;
- Flexible reports, and data import and export;
- Graphic Web interface, multi-windows, easy operation;
- Transparent integration via data banks alongside several systems such as ERPs, Human Resources, etc.;
- Complete auditing.

SUPPORT A

- Unlimited levels;
- Unlimited site servers;
- Unlimited card users;
- Unlimited simultaneous client application;
- Unlimited number of controllers and readers;
- Unlimited entry alarm;
- Unlimited exit relay outputs;
- Unlimited client work stations;
- Unlimited time zones;
- Unlimited simultaneous monitoring;
- Unlimited user privilege levels;

** The scalability of the VAULT Cloud Central is limited only to the physical limit of your infrastructure and system.

VAULT CLOUD SITE

RESOURCES

- Programmable functions, such as alarm entry control, elevator control, controller downloads and uploads, multi-level local and global antipassback, integration with fire systems, grouping of escape routes, door security clearance, import and export utilities, etc.;
- Off- the- shelf, pre-formatted multiple integrations, such as real-time video and CFTV reproduction, LPR Systems, etc.;
- Multiple layers of maps with interactive icons;
- Alarm recognition and treatment;
- Scheduled times for door clearance;
- Send emails and SMS to selected users;
- Multiple card formats and facility codes;
- Flexible commands for card users such as temporary access level (shift changes) and provisional cards, card lock, penalties, card and event tracking, Double custody of access cards, etc.;
- Optional guard patrol system, alarm monitoring, I/Os control, multi-level locker and rack control;
- Optional application module for visitor registration – VMS, with several resources such as 5 photos, registration of belongings, pre-registration, etc.;
- Automatic visitor card cancellation.

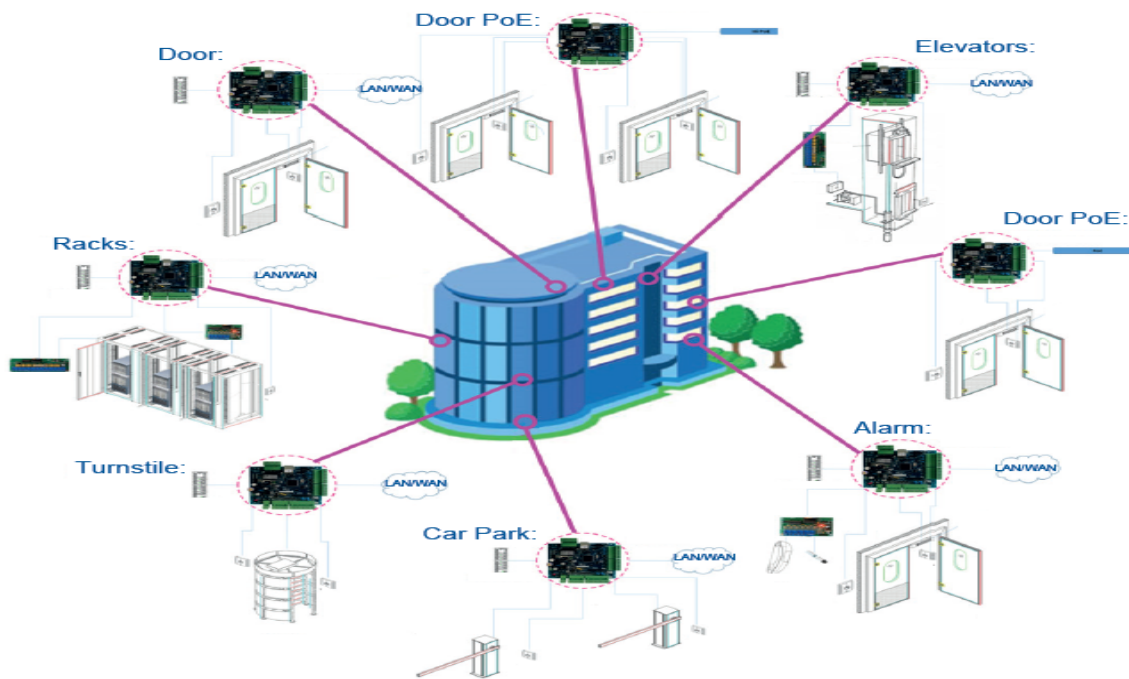
INTEGRATED CCTV SURVEILLANCE & BIOMETRIC READER

The below brands of the CCTV Surveillance system & Face Reader are already built into our door access application. Cameras associated with these systems can be detected and applied to doors allowing the user to view video footage associated with events within Vault Cloud Central software.



APPLICATIONS FOR THE USE OF THE VAULT ENTERPRISE SOFTWARE

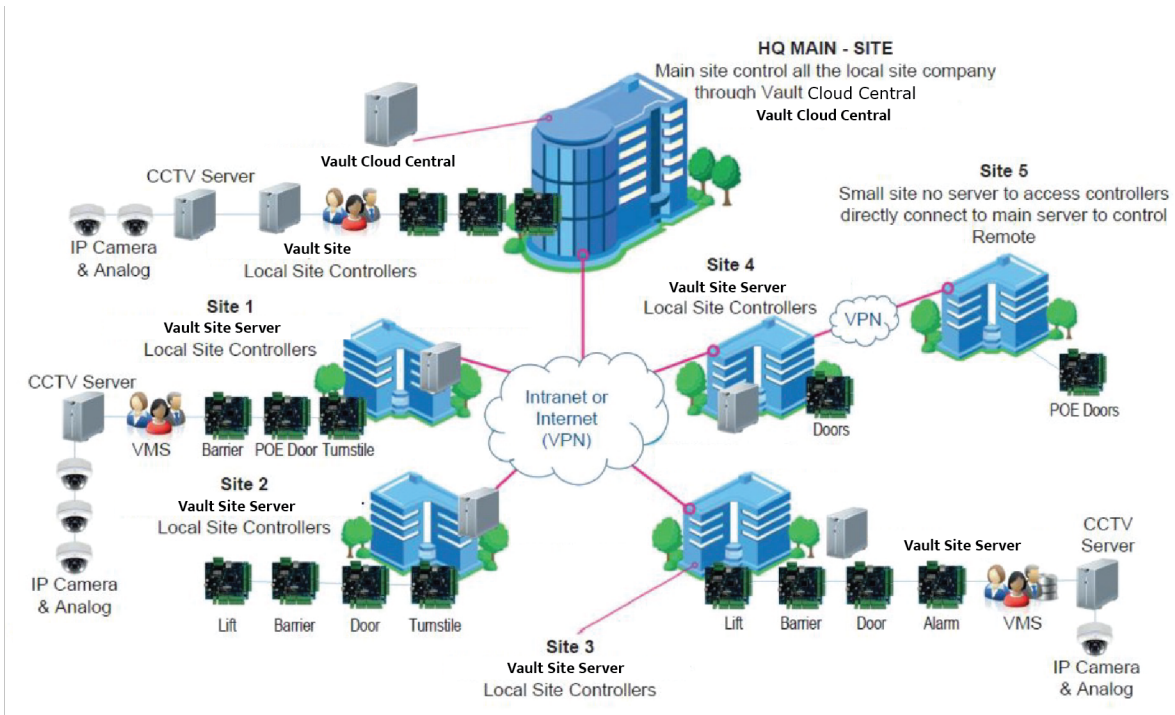
APPLICATIONS FOR THE USE OF THE VAULT CLOUD CENTRAL



VAULT CLOUD CENTRAL ON PREMISES WITH MULTIPLE LOCATION ARCHITECTURE

VAULT CLOUD CENTRAL

Cloud Central Access Control Integrated System



VAULT CLOUD CENTRAL ON CLOUD WITH MULTIPLE LOCATION ARCHITECTURE

