



# AY-UF355 Lite

ELEVATE THE ENTRANCE.  
WITH FACE.

## DATASHEET

# AY-UF355 Lite

### Unrivaled Performance.

- Velocity at the edge - Experience sub-second authentication (<1.0s) driven by a Dual-core ARM processor.
- Optical Mastery - Engineered with 120db Wide Dynamic Range (WDR) and dual RGB+IR cameras. Flawless performance in high-glare lobbies and low-light corridors.
- Enterprise Capacity - Massive on-board intelligence managing up to 10,000 faces, 10,000 cards, and 200,000 logs. Full autonomy, online or offline.

### Absolute Security.

- The Architecture of Trust - Advanced "Live Detection" prevents spoofing from photos or masks. Housed in an IP42 silhouette.
- Multimodal Precision - An unified biometric hub. Seamlessly combines facial recognition and card support
- Refined Interface - High resolution 5-inch touch screen designed for intuitive interaction.
- Privacy by Design – Built with GDPR-compliant data handling.



## DATASHEET

# AY-UF355 Lite

System	
Authentication Methods	Face / Card (Mifare) / Fingerprint / QR Code
Card	Up to 10,000
Face	Up to 10,000
Logs	Up to 200,000 (without images), 50,000 (with images)
Recognition Distance	0.5m ~ 1.5m
Matching Speed	< 1 sec
Camera Technology	Dual-lens Face Recognition (IR + RGB)
Display	5-inch IPS All-View LCD Touch Screen (480 × 854)
Live Detection	Supported
I/O interface	Relay Output, Door Sensor, Exit Button
Communication	
Communication Mode	TCP/IP, Wiegand
Processing	
MCU	Dual-core ARM Cortex-A7
Memory	4GB ROM + 512MB RAM
Electrical	
Power Requirement	DC 12V, 2A
Mechanical	
Dimension	186 (L) × 94 (W) × 23 (H) mm
Environmental	
Operating Temperature	-10°C ~ 50°C
Humidity	0% ~ 90% (non-condensing)
Ingress Protection	IP42
Regulatory	
Certifications	CE, FCC

DATASHEET

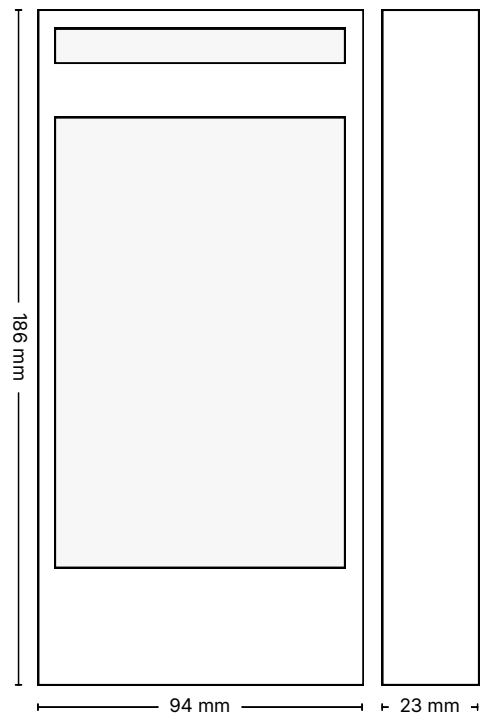
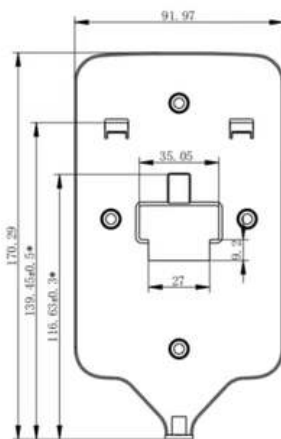
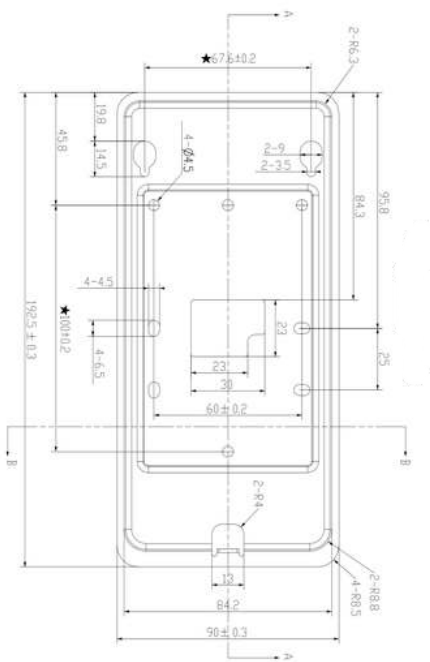
# AY-UF355 Lite

Order Information



AY-UF355N-LITE

Dimensions



DATASHEET

# AY-UF355 Lite

System Architecture

