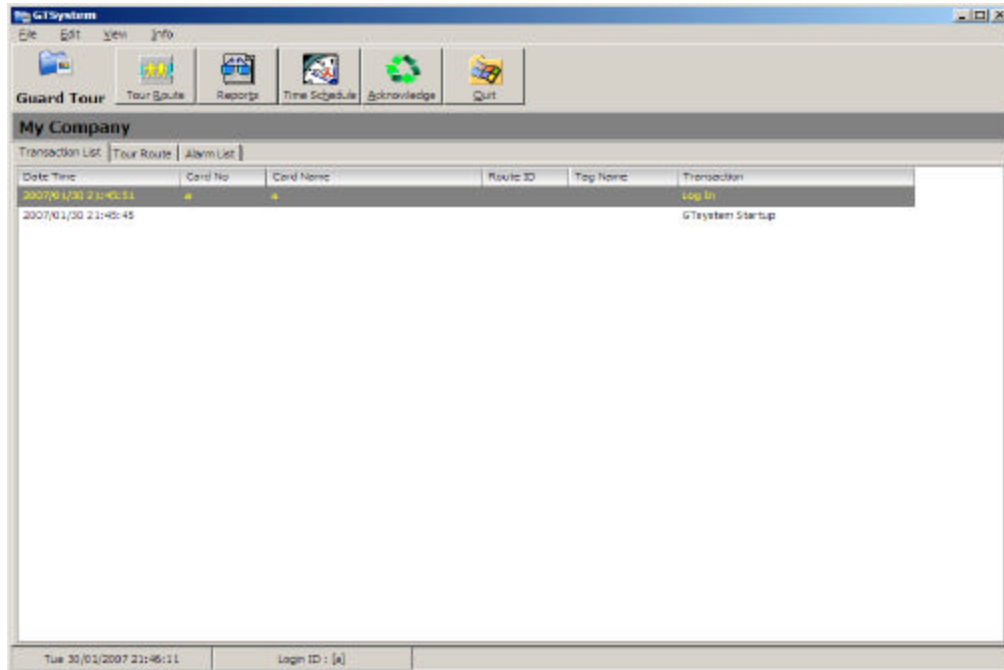




# FALCO IP Guard Tour Management System



## System Overview

On-line Guard Tour Management system is an automated record keeping system that records tours and inspections performed by security officer at specific locations in a real time basis.

It allows for one or more card readers to be checked during routine tours to verify that pre-defined routes are completed. Security officers use their credentials at card readers in a sequential order that is conducive to their watch path.

Each tour delivers events to Alarm Monitoring, allowing operators to know if checkpoints are reached on time, early, overdue, or late. Each guard tour station is equipped with a card reader that is attached to a guard tour control panel.

FALCO security management software will update the latest guard tour transaction record via TCP/IP socket messaging onto Guard tour management system. Each security guard as he or she makes rounds from one assigned guard tour station to the next. All entries are date and time stamped stored into system database.

User configurable tour route definition, the Guard tour system come with interface for system supervisor to program the touring point sequence, the system user can have a flexible touring point vary from time to time, instead of having a constant tour route.

Comprehensive activities report can easily generate from the recorded transaction event. And best of all, the information is logged as it is happening in real time.

A conventional security guard tour system must wait until the security guard returns to the central office and downloads the security guard tour information from a system reader or scanner but with this real time scanning Guard Tour System, a supervisor can monitor the tour movement efficiently via computer workstation and do not need to wait until the completion of touring.



# FALCO IP Guard Tour Management System

## System Specifications:-

- Personalization with user definable company information
- Multi-user login session with multi-menu accessibility assignment
- 10 digits tour card id definition
- Support up to 32 check points per tour route
- Support up to 3 card id assignment per tour route
- 100 sets tour route definition
- Definable tour activation/deactivation time schedule setting
- Grace period assignment for tour routing
- Individual check point traveling time assignment
- 100 sets time schedule with 7 weeks day (MON to SUN) per time schedule
- 100 sets user definable event code and messages
- Online transaction monitoring
- Tour route record monitoring
- Tour route activation and deactivation monitoring
- Early In and Late In check point monitoring
- Tour route suspension/resumption
- System user acknowledge on route begin/end with reason assignment
- System login/logout operation
- Transaction logging
- Transaction log viewer
- Alarm log viewer
- Alarm even reporting
- Transaction event reporting
- Route summary reporting
- Alarm acknowledgement

## Computer Specifications:-

- Pentium IV and above
- MS-Window XP, Window 2000
- 50MB hard disk free space
- 512MB memory

